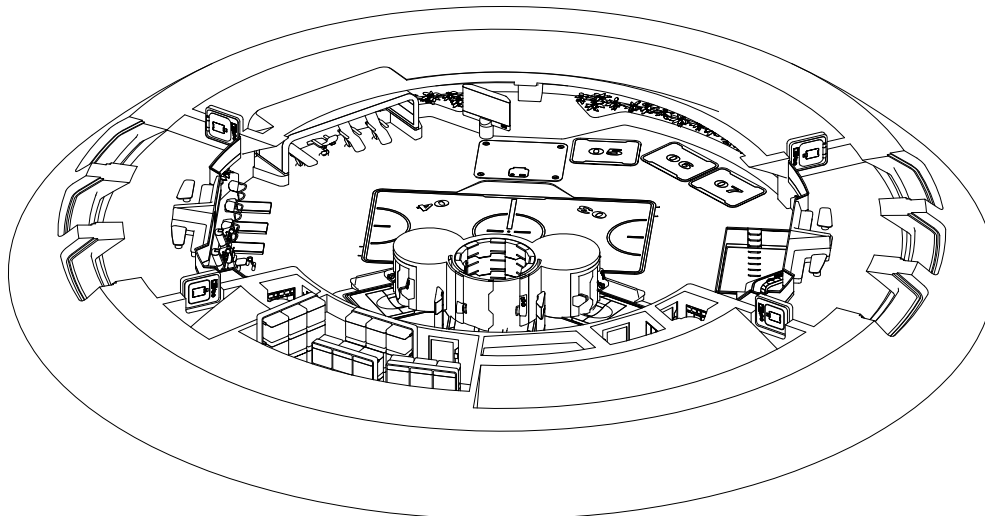
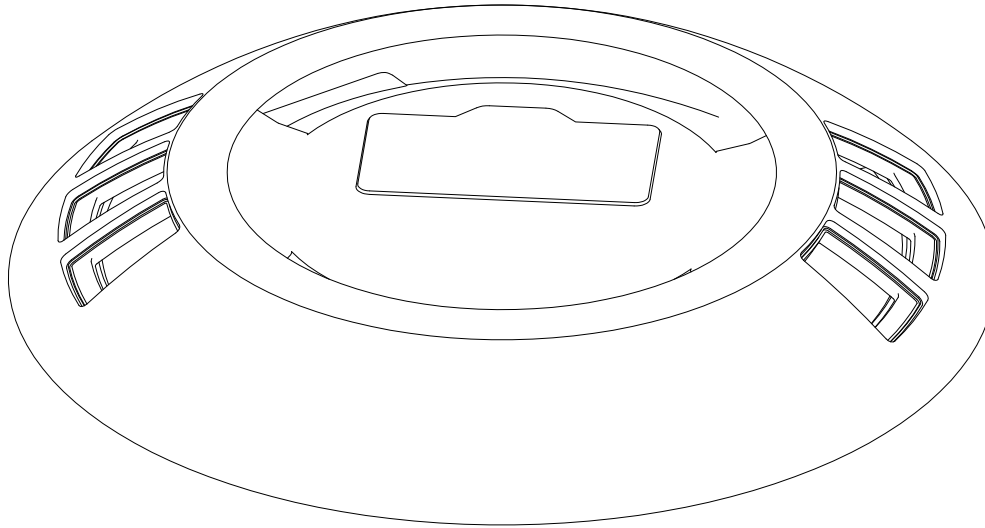
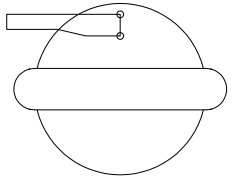


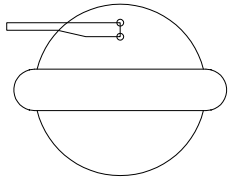
Korvettenprojekt 3435 A.D.



Schnittebene
+26.355 m
+18.750 m
230/30°



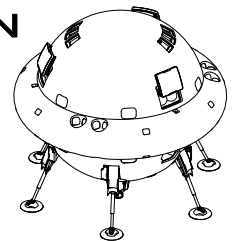
Schnittebene
+23.705 m
+18.750 m
230/30°



M 1:333

0 1 2 3 4 5m

RECON



Blatt 020

<http://www.Korvettenprojekt.de>
(c) 2007 05.12 Holger I. Ogemann